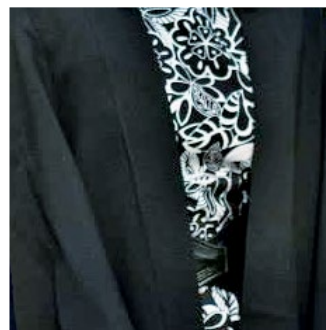
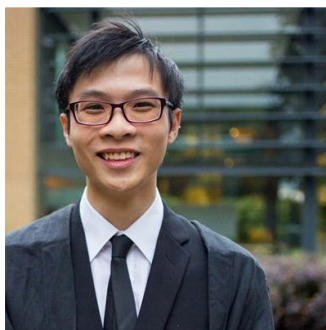
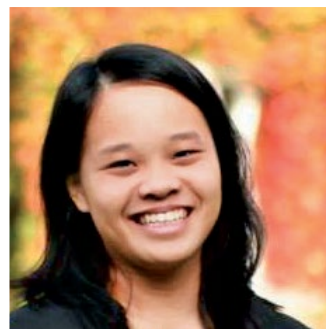


A-LEVELS

- Edexcel International Advanced Levels
- Cambridge Assessment International Education





A-Levels straight As scorers.



CONTENTS

- 03** Introduction to A-Levels
- 05** Edexcel International Advanced Level and Cambridge Assessment International Education
- 07** Getting the Edge with Malaysian Toray Science Foundation and Speech, Drama and Writing
- 08** Getting the Edge with Mathematics and Multimedia Workshops
- 09** HELP's Centre for A-Levels
- 10** Profiles of Achievers
- 12** Counselling and Pastoral Team
- 13** The A Team



A LEVEL ABOVE THE REST

Our proven record of achievements speaks for itself.

With a total of 101 World Top Awards to date, including this year's record of six, the Malaysian Toray Science Foundation (MTSF) winners for nineteen years running, and not surprisingly, being declared the "Best and Biggest Edexcel A-Levels Centre in the World" in 2011 (World Conference, Hong Kong), HELP is indeed more than a centre of excellence. The long list of top achievers continues to expand, with an increasing number of annual graduates gaining both admission as well as scholarships to top universities worldwide.

So the big question to many who are interested to learn, how do we do it every time? Is it our dedicated A Team, the quality of our students, the facilities, or something else besides the specially built-in GTE (Getting the Edge) programme? Perhaps, but the answers are much simpler to understand.

Firstly, it is all about ambition. A-Level students are very, very ambitious. They want to gain admission to the best universities and to find the most rewarding

careers for their future. Secondly, it is all about beliefs. These students believe nothing can stop them from exploring for the best options. Whether they walk in after school with their 10 As, 7 As, 5 As or even much less, the A-Levels will always be one more opportunity to achieve, a one-stop preparation.

Finally, they have to make their choice, between best campus, best location, or best academic results. I congratulate all who have joined us and contributed to such an impressive record of excellence, and to the many more to come who will likely surpass their own expectations with a little help from us.

Cheers, all are welcome to HELP - always a level above the rest.

Jahn Cheah

**Dean, Faculty of University Foundation Studies,
HELP Academy
Director, Department of A-Levels
Senior Lecturer in Mathematics**



A-LEVELS @ HELP

- HELP has coached A-Level students to enter the world's top universities: Cambridge, Oxford, Imperial College London, Harvard, Yale, Princeton, Stanford, Chicago, Melbourne and the Australian National University, with many gaining both admission and scholarships either from prestigious scholarships abroad or directly from the universities.
- Centre of Excellence: the Department of A-Levels was the first centre to be awarded the Centre of Excellence by Edexcel International UK for exceptional delivery of the London GCE A-Levels in recognition of its superior facilities, outstanding quality of teaching, excellent pastoral support and, above all, academic results (holder of the highest record of 101 World Top Awards).
- State-of-the-art facilities, especially the Curie Science Labs, which are equipped with top quality apparatus and safety features. These labs are acclaimed to be among the best in the world by the Edexcel A-Levels Chief Examiner from the UK. In addition, the unique Students Lounge bears testimony to HELP's total commitment to providing for the essential needs of students, in and out of the classroom.
- The Getting The Edge (GTE) programme cultivates leadership and organisational skills among students who work closely with our most experienced lecturers on award-winning science projects. Our students also participate in creative writing, drama as well as challenging



yet fun mathematics workshops; and develop technological skills through multimedia workshops.

- Unique Pastoral Care: each student is assigned to a mentor who monitors and guides him or her on academic performance and provides advice on applications for university admission. Counsellors from the Department of Psychology also provides a range of mental health and leadership programmes and personal counselling services.
- Student Placement Centre: dedicated staff from this centre assist A-Level students in their application for admission to universities worldwide

and in their bid to secure scholarships.

- Recognised by the Qualifications and Curriculum Authority (QCA), UK and fully accredited by the Malaysian Qualifications Agency (MQA).
- HELP now offers a 'dual option' advantage, the first centre in the country to conduct both the Edexcel International Advanced Level and the Cambridge Assessment International Education (from the 'A Team' to the 'A* Team').



Edexcel International Advanced Level (IAL) and Cambridge Assessment International Education (CAIE) : Worldwide Recognition

- IAL and CAIE are top ranked examination boards.
- Both operate under guidelines for quality, standards and consistency specified by the Joint Council for Qualifications (JCQ) and Cambridge assessment of the United Kingdom.
- There is no difference in the level or quality between the examinations of Edexcel and CAIE.
- The specifications of syllabuses may differ but both of them are recognised by top universities, colleges and employers all around the world.

Main difference between IAL and CAIE

- IAL modular system allows students to retake any module to improve their subject grade without having to repeat an entire level. Only the highest mark scored in any attempt will be taken into account.
- CAIE's linear system requires students to take the exam in two phases – AS level and A2 level – to make up a full A-Level pass. Each level accounts for 50% of the total marks. Students dissatisfied with any units must re-sit the entire level. Only the last score will be taken into account. Although universities often require a number of full A-Level passes for admission, AS grades also attract UCAS points and are counted for university entrance.

Successful University Placement (partial list)

- University of Cambridge
 - University of Oxford
 - London School of Economics
 - University College London
 - Imperial College London
 - King's College London
 - University of Edinburgh
 - Royal College of Surgeons Ireland
 - University of Hong Kong
 - National University of Singapore
 - University of Melbourne
 - Australian National University
 - Harvard University
 - Stanford University
 - Princeton University
 - University of Chicago
 - University of California
 - Massachusetts Institute of Technology
 - Trinity College Dublin
 - University of Bristol
 - University of Warwick
 - University of Bath
 - Seoul National University
 - KAIST
- and many more...

	Edexcel	Cambridge
Intake	January, March, July	January, March, July
Entry Requirement	5 SPM/O-Level credits (with a pass in Bahasa Melayu & Sejarah for SPM students), or equivalent qualification	5 SPM/O-Level credits (with a pass in Bahasa Melayu & Sejarah for SPM students), or equivalent qualification
Subjects Offered	Minimum 3 or maximum 4 from different rows: <ul style="list-style-type: none"> • Mathematics • Chemistry or Law • Physics or Accounting • Biology or Economics • Further Maths or English Literature 	Minimum 3 or maximum 4 from different rows: <ul style="list-style-type: none"> • Mathematics • Chemistry or Law • Physics or Accounting • Biology or Economics • Further Maths or English Literature
Assessment/Exams	Modular examination: January and June	External examination in 2 phases: Advanced Subsidiary Level (AS Level) and A2 Level: May/June and October/November
Duration	All intakes: 1½ years	All intakes: 1½ years



GETTING THE EDGE

It is a personal development programme that is offered only by the Department of A-Levels at HELP Academy. This workshop aims to groom participants and guide them with the right skills on how to write an excellent personal statement & win an interview in order to get into World Top Universities.

GTE students are entitled to 2 hours per week added to their normal academic timetable, where they will work with lecturers to develop their inter-personal skills such as

critical thinking, public speaking, writing, analytical thinking, creative thinking, acting, etc.

It is strategically designed to consist of 4 workshops:

- SPEECH, WRITING AND PRESENTATION (SWP)
- MALAYSIA TORAY SCIENCE FOUNDATION (MTSF)
- CURRENT AFFAIRS (CA)
- MATHEMATICS (MATHS)

GETTING THE EDGE WITH

MALAYSIA TORAY SCIENCE FOUNDATION

Malaysia Toray Science Foundation (MTSF) is a foundation set up to promote and advance science and technology in Malaysia through various competitions and research grants. Inspired by the noble effort of MTSF, HELP Academy's A-Levels Department have introduced a workshop called MTSF Workshop with a similar aim to inspire our students to develop a greater interest and a deeper understanding about science and technology.

A culture of creativity and innovation is encouraged in the workshop through various fun and exciting activities and projects. Apart from that, students are also encouraged to turn their novel idea into functional and effective projects with the emphasis not only on creativity but also on practicability and cost-effectiveness.

HELP lecturers, working together with their students, have won countless awards in the MTSF Science Education Awards over the years.

CURRENT AFFAIRS

The key to successful university applications lies not only in a student's grades but also in the writing of their personal statements and navigating through the university interviews. To this end, a comprehensive knowledge of current affairs and an ability to critically analyze these issues helps lend the student an air of maturity, which distinguishes them from other candidates.

This component aims to give students a deeper understanding of how to deconstruct the factors behind the events that are currently occurring in the world. The

aim of the classes is to introduce an event, look at the causes behind the event and explore the wider repercussions of the event. Knowledge of current events will also help students widen their outlook on the world.

Issues tackled in this unit include global conflicts, political matters, economic crises, and the socio-economic impact of technological developments. The lesson plan of the class is not rigid but will adapt to where the discussion takes it.

GETTING THE EDGE WITH

SPEECH, WRITING AND PRESENTATION (SWP)

“Confidence, like art, never comes from having all the answers; it comes from being open to questions.”

– Earl Gray Stevens

Designed in three modules, the SWP workshops coach you to come out of your comfort zone and put on your thinking caps in a collaborative learning environment.

Module 1: Effective presentation skills.

You will be taught how to confidently face an audience, adopt the right body language, and the best tonal quality and eye-contact, with the aid of PowerPoint presentations. In the process, you will say good bye to your stage fright, which will help you to find your own voice and identity.

Module 2: How to write effective personal statements for college admissions.

You will be encouraged to identify your strengths and weaknesses, evaluate your experiences and talents, arrange your line of thoughts in the most convincing manner and thus write the best personal statements.

Module 3: How best to prepare for college admission interviews.

You will be taught specific skills and best practices that mould you into an effective interviewee and answer unexpected questions from interviewers, thus improving your chances of getting admission in your university of choice.

MATHEMATICS

GTE Mathematics workshop provides a platform for students to explore mathematics in different ways by applying mathematics into our daily life. The aim of the workshop is to thrill students with an engaging piece of mathematics and to initiate a fundamental paradigm shift in how the world perceives and enjoys mathematics. Having the opportunity to discuss and share experiences on the strategies of application in real life problems deepen their understanding and make mathematics to be more exciting. Mathematics takes on new meaning when students can collaborate with other students by sharing their ideas.

Different activities are conducted in each semester to encourage creativity in mathematics, with the help of computer software, e.g. drawing a diagram or perhaps a concept map or an animation with math equations. Technology is one avenue through which students can use their creativity by describing a mathematical concept with imaginative computer animation, live action, music and special effects.

GTE workshops transform and declutter mathematics content to reveal its coherence, meaning and joy where they could explore the realistic applications of math skills and concepts to the real world. Our A-Level students are attracted to mathematics through the workshop, where sharing and discussions help Mathematics to become more understandable, exciting, and eminently worthwhile.





Our A-Levels straight As scorers.

HELP's Centre for A-Levels - Your Careers Junction *Always a level above the rest*

- Recorded 101 World Top Awards in Accounting (30), Law (15), Chemistry (13), Physics (12), Biology (8), Mathematics (11), Economics (3) Further Mathematics (8), English Literature (1)
- Malaysian Toray Science Foundation Awards for 19 years running
- In 2013, 2014, 2015, 2016, 2017 & 2018 HELP Academy was recognised by Pearson Edexcel as a Top Performing Registered Training Centre
- 47% Straight As in one year alone
- Declared "Best & Largest A-Levels Centre in the World" (Edexcel World Conference in Hong Kong, 16 March 2011)
- Increasing list of scholarship recipients for admission to top universities in the UK, USA and Australia

Note: First year undergraduate studies is structured to allow for entry by students from diverse subject backgrounds. Hence, universities have advised that it is not necessary for potential Law, Economics or Accounting and Finance students to study these subjects at A-Levels, while science students will continue to enjoy the variety of options for careers in science and arts.

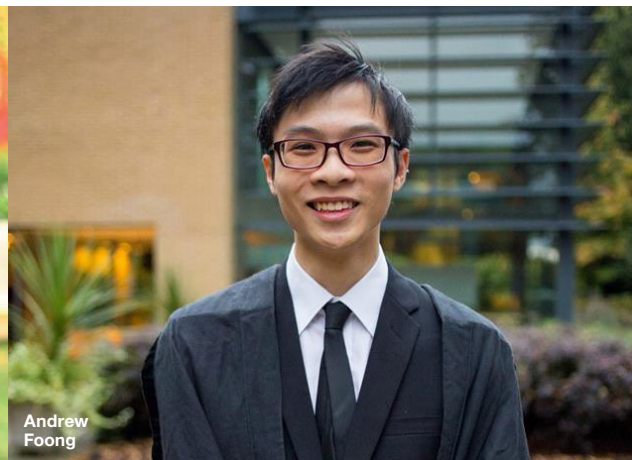
Scholarships won by HELP A-Level Students (partial list)

- Jabatan Perkhidmatan Awam (JPA)
- Singapore Government Investment Corporation (GIC)
- Bank Negara Scholarship
- Maybank Scholarship
- CIMB Corporate Scholarship
- Yayasan Sime Darby Scholarship
- Maxis Scholarship for Excellence
- Khazanah Nasional Global Scholarship
- ASEAN Scholarship
- Shell Scholarship
- Securities Commission of Malaysia Scholarship
- University Scholarships
- Petronas Scholarship
- Ministry of Education (MOE)
- Bank Pembangunan Scholarship
- Yayasan Sabah
- and many more...

CAMBRIDGE UNIVERSITY COMPLIMENTS HELP ACADEMY AGAIN IN 2017



Grace Ng (left)
and Melissa Chee



Andrew
Foong

“Two former students at your school have achieved Firsts in recent examinations:

Grace Ng for Part I of the Chemical Engineering Tripos

Melissa Chee for Part IIB of the Chemical Engineering Tripos

Much of the credit for this must go to the education they received before coming to Cambridge. We are always keen to receive applications from students of such calibre.”

**Professor Dame Carol Black, Principal of Newnham College, Cambridge to
HELP Academy**

“I am delighted to tell you that **Andrew Foong** has finished his year at Fitzwilliam with a First Class result in Engineering. We would be delighted to receive applications from any of your students who promise such outstanding achievement... our Admissions Tutors are keen to stay in close touch.”

**Dr Paul Chirico, Senior Tutor, Fitzwilliam
College, Cambridge**

PEARSON OUTSTANDING LEARNER AWARD WINNERS 2018



Gillian Goh Jia Yi

Highest mark in the World –
Accounting
Studying Economics at the
University of Warwick

Kim Taeyoung

Highest mark in the World –
Physics
Studying Computer Science at
Kaist, South Korea

Heng Wei Lynn

Highest mark in Malaysia – Mathematics
Studying Law at the University of Bristol

Teh Kai Zhi

Highest mark in Malaysia – Chemistry
Studying Engineering Science at
Oxford

Lee Kyungeun

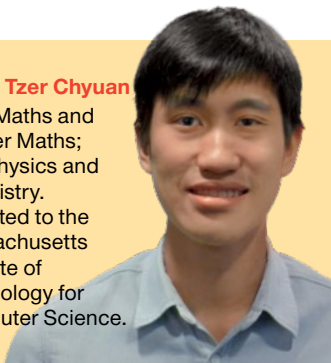
Highest mark in Malaysia – Further
Maths
Highest mark in Malaysia – Maths
Studying Maths & Stats at the
University of Warwick

From left: Alan Malcolm (Pearson Education), Wong Set Pew (mother of Heng Wei Lynn), Koh Wei Leng (mother of Teh Kai Zhi), Jahn Cheah, Dean of HELP Academy University Foundation Studies, Lee May Ling (mother of Gillian Goh), Kim Jaeho (father of Kim Taeyoung), David Thomas (Deputy British High Commissioner).

PROFILES OF ACHIEVERS

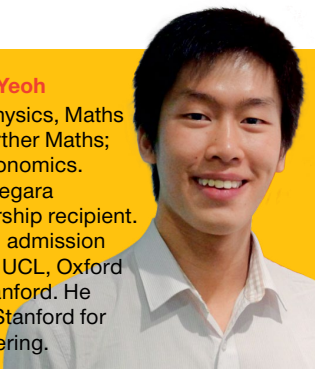
Wong Tzer Chyuan

A* in Maths and Further Maths; A in Physics and Chemistry. Admitted to the Massachusetts Institute of Technology for Computer Science.



Calvin Yeoh

A* in Physics, Maths and Further Maths; A in Economics. Bank Negara Scholarship recipient. Offered admission to LSE, UCL, Oxford and Stanford. He chose Stanford for Engineering.



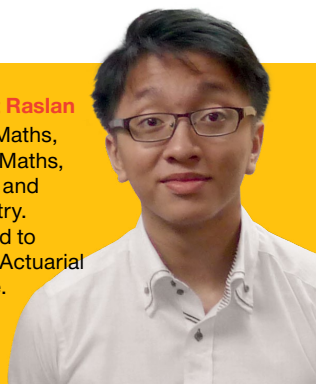
"HELP is the best college experience ever. The lecturers and administrators have guided and provided me with advice on key lessons in life which I will always treasure as I expand my perspectives on life."

Avinaash Subramaniam

A-Levels 4 As. Harvard University on a Harvard Faculty Scholarship. First runner-up in the 2008 Oxford Cambridge Society Public Speaking Competition. HELP Academy Distinction Scholarship Award. SPM 10 A1s and 1 A2 from SMK Damansara Jaya. United Nations Youth Achievement Award.

Hidayat Raslan

4 A* in Maths, Further Maths, Physics and Chemistry. Admitted to LSE for Actuarial Science.



Neoh Yi Xing

3 A* in Maths, Chemistry and Biology and A in Physics. Admitted to Cambridge for Natural Sciences on JPA Scholarship.



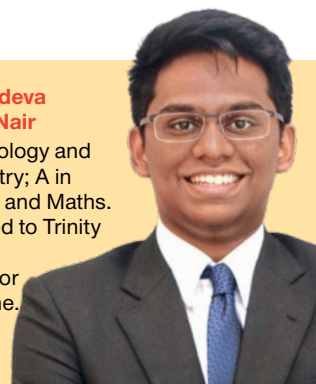
"The best part of HELP's A-Levels programme is its resources, not only for the students' current needs but references for their future academic prospects as well."

Looi Bob Rick

A-Levels 4 A*. Australian National University (Actuarial Science) on an ANU Malaysian Alumni Scholarship. School Achiever Scholarship Award (SASA) for A-Levels. SPM 9 A1s and 2 A2s from SMK Damansara Jaya PJ.

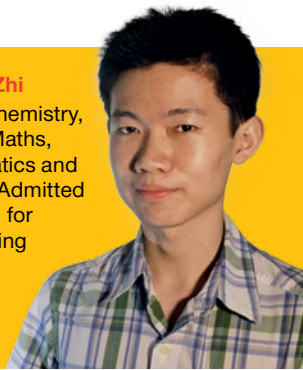
Hareshdeva Devan Nair

A* in Biology and Chemistry; A in Physics and Maths. Admitted to Trinity College Dublin for Medicine.



Teh Kai Zhi

4 A* in Chemistry, Further Maths, Mathematics and Physics. Admitted to Oxford for Engineering Science.



"I am extremely grateful to be able to pursue medicine in such a renowned university [Imperial College London]. I hope the knowledge I gain will allow me to continue HELP's mission to share our success with the community we serve."

Tan Wei Jian

A-Levels 4 A*. Double World Top Awards for Biology and Chemistry. Studying Medicine as a JPA scholar at Imperial College London. SPM 10 As from SMK Kepong Baru KL.

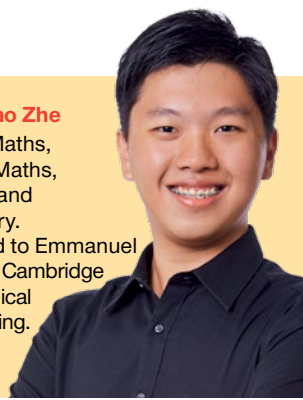
Syakila Nur Aini binti Jamel

4 A* in Economics, Physics, Maths and Further Maths. President of the A-Levels Students Council. Admitted to LSE for Economics.



Chun Hao Zhe

4 A* in Maths, Further Maths, Physics and Chemistry. Admitted to Emmanuel College, Cambridge for Chemical Engineering.



"The GTE programme really helped my Cambridge application - the mock interviews prepared me for the real deal and the personal statement forced me to polish the rough corners of my original critique."

Melissa Chee

A-Levels; 4 A*s. Chemical Engineering at Cambridge University under the Cambridge Commonwealth Trust Scholarship. Double World Top Awards for Further Maths and Physics. SPM 9 As, from SMK Damansara Jaya.

NURTURING A-LEVEL STUDENTS INTO TOP ACHIEVERS

The HELP Counselling Team comprises distinguished academics and specialists who nurture students to become all-round achievers, giving them the advantage to succeed.

Academic counselling

Identification of universities offering high quality programmes aligned to students' goals and aspirations, while inculcating in them the need for mental and academic discipline, and cultivation of a scholarly aptitude.

Pastoral counselling

Lecturers are assigned to mentor and monitor students to ensure they are in the best emotional and psychological health to succeed.

Admissions counselling

Members of HELP's Pastoral Team are able to give first-hand advice on preparation for interviews and admission to good universities. In the process, the counsellors identify, tease out and nurture inherent characteristics, talents and strengths that students are not aware they possess.

Career and profession counselling

HELP offers students avenues for career upgrade, change and diversification through its 13 Master's and two Doctoral programmes at the ELM Graduate School; HELP's industrial and international university partners as well as HELP's alumni, industrial and professional contacts – all of which enables graduates to access and form alliances for business and entrepreneurial success through seminars and dialogues, continuing professional development courses, SME Corp-sponsored programmes, and mentorship by successful business and corporate personalities.

Team members



Datuk Dr Paul Chan

President and Vice-Chancellor of HELP University
BEcon (Hons) (Malaya),
MSc (McMaster), PhD (ANU)

Strategic management; educational entrepreneur and pioneer



Prof Dato' Dr Zakaria Ahmad

Deputy Vice-Chancellor (Research) BSocSc (Pol Sc) (Singapore), MA (McMaster), PhD (MIT)

Political scientist; diplomacy, military and strategy studies



Dr Khong Kim Hoong

Deputy Vice-Chancellor (Academic)

BEcon Hons (Malaya), MPIA, MA, PhD (Pittsburgh)

Geo-politics of Asia Pacific; political economy of ASEAN



Dr Goh Chee Leong

Vice President, HELP University; Dean, Faculty of Behavioural Sciences, HELP University

BA (Psych) First Class Hons, PhD (Otago)

Industrial psychologist; industrial relations



Dr Tan Ka Kheng

Professor, HELP University
BSc (Birmingham), MS (California, Berkeley), PhD (Cantab),

FIChemE, CEng (UK), FIEM, PEng

Chemical engineer; environmental scientist; theoretical physicist



Prof Eva Latham

Professor of Human Dignity
MSc (Ed) (Utrecht), PhD (magna cum laude) (Essen)

Unesco award winner for initiatives in human dignity and ethics; consultant to governments and NGOs in Europe



Mr Jahn Cheah

Dean, Faculty of University Foundation Studies
BSc (Maths), DipEd (Malaya),
MSc (App Stats) (UPM)

Ex-maths examiner for government schools; industry leader with many breakthroughs in A-Level education; creator of maths quick solution techniques



Dr Paolo Casadio

Head, Department of University of London International Programmes, HELP College of Arts and Technology

BA (Rome), MSc (Southampton), PhD (Rome)
Financial and investment planner, risk analyst and econometrician.



Mr James Peter DeGrazio

BA (Theatre) Dalhousie, Cert RADA, Postgrad Cert Ed (City and Guilds)

Performing arts practitioner and teacher in both classical and contemporary theatre.



Dr Chan Teng Heng

Vice-President, HELP College of Arts and Technology
BSc (Hons) (Malaya), MBA

(Aston), PhD (London)

Organisational management; business administration



Mr Baldev Sidhu

Head, Department of University of London International Programmes, HELP Academy

BA (Geog) Hons (Portsmouth), MA (SEA Studies) (SOAS London)

Asian business; business, globalisation & socio-economic context of Asia Pacific



Ms Serena Sinniah

Manager, Center for Psychological Counselling Services

BA (Psych, Rhetoric & Comm Studies) (Drake), MClinPsy (UKM)

Clinical psychologist; professional counsellor

THE A TEAM



Jahn Cheah Thean Lye
Dean, Faculty of University Foundation Studies, HELP Academy
Director, Department of A-Levels
Senior Lecturer in Mathematics
MSc (App Stats) (UPM), BSc (Maths), DipEd (Malaya)

Maths team



Aw Seng Hong
Senior Lecturer
MApp Stats (UM), BSc Ed (Maths/Chem) Hons, (UM)



Anuar Bin Shamsuddin
Senior Lecturer
BSc (Sc) (Polytechnic of Central London)



Lin May Ching
Senior Lecturer
MSc (Maths) (London), BA (Tionghoa & Pure Maths) Hons (Malaya), CertEd (Birmingham)



Philip Loh Soo Ming
Senior Lecturer
BSc (Maths) Hons (Malaya)



Tan Chin Sin
Lecturer
MAppStats, BA (Maths/Econ) Hons (Malaya)



Lam Sow Yee
Senior Lecturer
BSc (Maths) Hons, DipEd (Malaya)



Lilian Wong Tan Li
Senior Lecturer
BSc (Act Sc) Hons (City University, London), DipEd (UKM)



Poon Chong Khim
Lecturer
MEd (Tech), B. Tech with Edu (Mechanical) (UTM)



Anthony Leong
Lecturer
BSc Mechatronics Engineering Hons (Liverpool), MSc Mech Eng (Oakland)



Shee Yu Shen
Lecturer
BSc (Statistics), MSc (Maths) UKM

Law team



Md Syazni bin Idris
Senior Lecturer
BLS, LLM (UiTM)



Sarah Munirah binti Abdullah
Lecturer
LLM (King's), LLB (Hons), BLS (Hons) (UiTM)

Physics team



Lee Siew Meng
Senior Lecturer
BSc (Physics), DipEd (Malaya)



Azis Bin Alias
Senior Lecturer
MEd (Distinction) (UM), BSc (Tasmania), Dip (General Translation) (ITBM)



Tan Ai Fong
Senior Lecturer
BSc & Ed (Physics) Hons (UTM), MSc (UNIMAS)



Seow Yoke Hock
Senior Lecturer
MEd (OUM), BSc (App Physics) First Class Hons (Malaya)



Lim Chee Seong
Senior Lecturer
MSc (Physics), BSc (Physics) Hons (Malaya)



Chew Cheng Lim
Lecturer
MSc (Physics) (Bristol)

Economics team



Tan Kimmie
Senior Lecturer
MEc, BEc (Western Australia)



Leong Set Wei
Senior Lecturer
MEd, BEc, DipEd (Monash)



Lawrence Low Chia Wei
Senior Lecturer
MEcon (Malaya), BEcon Hons (UKM)



Subashini a/p Maniam
Lecturer
MSc Econ (UPM), BSc Maths with Econ (UMS)

Accounting team



Francis Dunn-Yu
Senior Lecturer
MICPA (TAR)



Low Yiing Ting
Senior Lecturer
BSc Accounting and Finance (LSE)

Chemistry team



Yeap Soon Chye
Senior Science Master/
Senior Lecturer
BSc (Ed) Hons (USM)



Kanagambigai Manickavasagar
Senior Lecturer
MSc, BSc (Biochem) Hons (Malaya)



Dr Khong Yoke Kum
Senior Lecturer
PhD in Polymer, BSc (App Chemistry) Hons (Malaya)



Pang Huey Shen
Lecturer
MSc (Chem), BSc (App Chem) Hons (Malaya)



Maria Dashani a/p Matthews
Lecturer
BSc (Biochem) Hons (UTAR)

Biology team



Jaslinder Kaur Dhillon
Senior Lecturer
BSc (Biotech) Hons (USM)



Ronnie Kueh Boon Lin
Senior Lecturer
MSc (Plant & Animal Physiology) BSc (Bio) Hons (UPM)



Foong Yoke Ting
Senior Lecturer
MPhil (Malaya), BSc (Gen) Hons (UKM)



Low Chiang Heng
Lecturer
MEnvr (UPM), BSc (Biochem) Hons (Malaya)



David Yap Yann Wey
Lecturer
BSc (Biohealth Science) Hons (UM)

English Literature team



Parvathy Nethiar
Senior Lecturer
MA (English Language and Literature) (Calicut)



Visalini A/P Loganathan
Lecturer
BA English Language & Literature Studies (USM), CELTA



**THE NEW BUSINESS
ANALYTICS AND
TECHNOLOGY INNOVATION
CENTRE, SUBANG 2**

Actualising
HELP University's
transformation into a
Digital University
(completion end 2019)



www.help.edu.my



facebook.com/HELPUniversity



twitter.com/HELPUni

HELP Academy Sdn Bhd (Co No: 700201-H) Registration No: KPT(JPS)600-48/W/060(12)-DK341(W)

Kompleks Pejabat Damansara, Jalan Dungun, Damansara Heights, 50490 Kuala Lumpur.

Tel: 03-2716 2000 Fax: 03-2095 7100 Email: marketing@help.edu.my